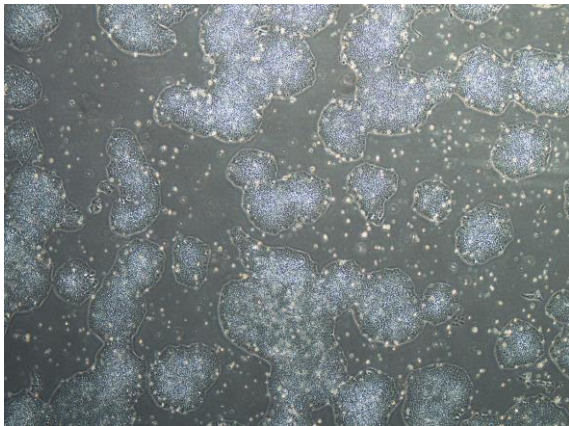
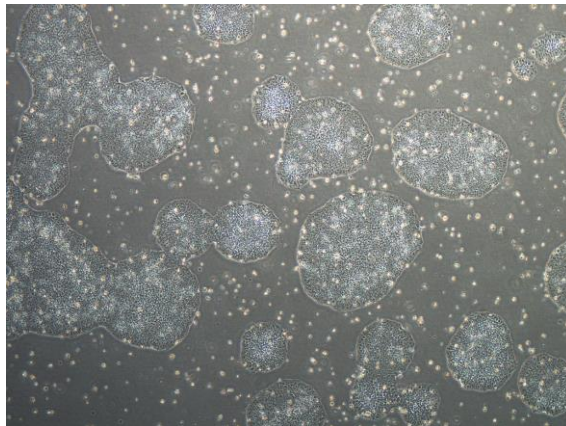


## 【 CiRA-j-1062 】 Morphology of iPSC colonies

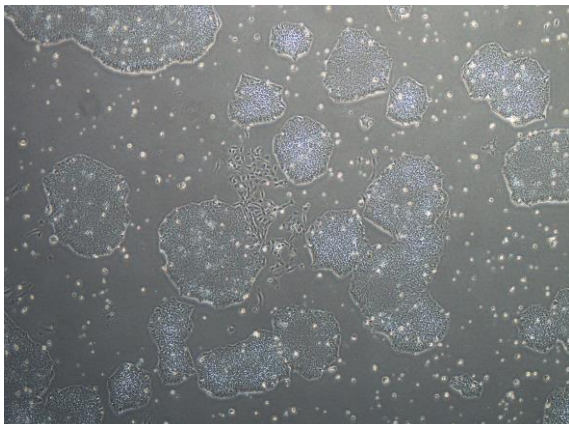
CiRA-j-1062-A: passage-3



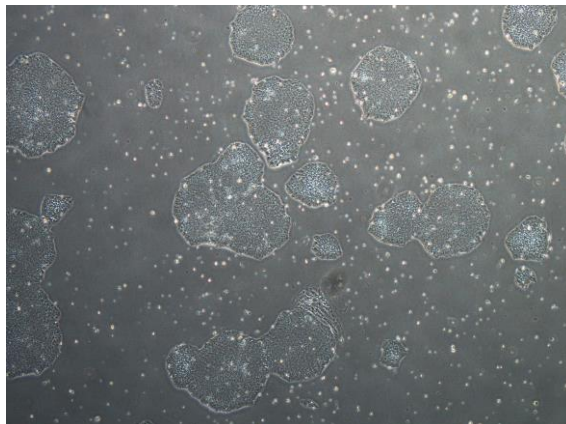
CiRA-j-1062-B: passage-3



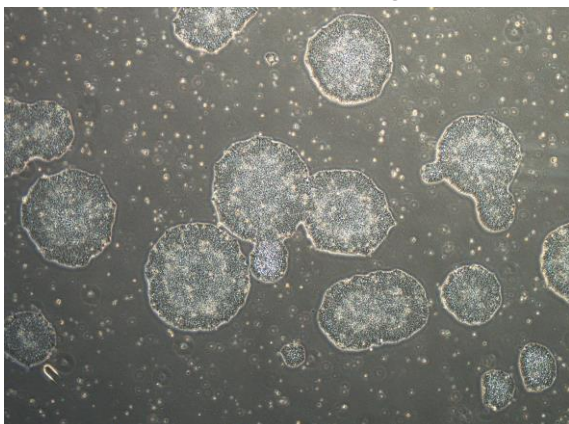
CiRA-j-1062-C: passage-3



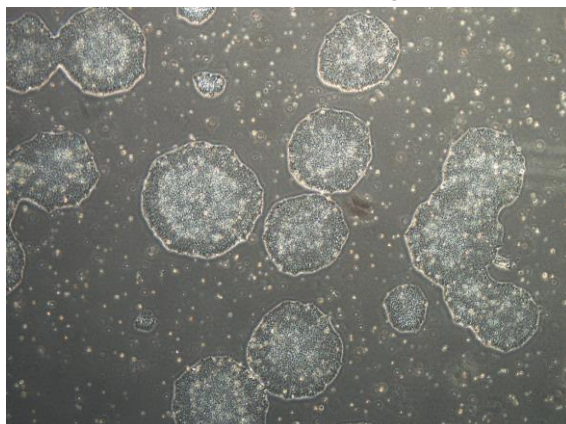
CiRA-j-1062-D: passage-3



CiRA-j-1062-E: passage-3



CiRA-j-1062-F: passage-3



( All images were captured at 4x magnification )